



Multinational Technologies
LIMITED RC 159726



TECHNICAL SERVICE PROFILE

INCORPORATED SINCE 1990

OUR VISION

"TO BE A FIRST CLASS OIL AND GAS SERVICE COMPANY."

OUR MISSION

"TO PROVIDE QUALITY AND HIGH VALUE SERVICES TO THE ENERGY SECTOR"

THE FOUNDING FATHER OF MULTINATIONAL TECHNOLOGIES LIMITED



- CHIEF G.ARET ADAMS
(FNMGS,FNAPE) 1938-2002.

HIS QUOTE.

- “I am passionate in my search for higher standards and new, exciting ideas, discoveries and solutions to the challenges that we face”

LOCATIONS/AFFILIATE



OVERVIEW

Philosophy:

- ⊕ Provide Solutions
- ⊕ Full Engineering Disciplines And Specialized Skills
- ⊕ Fully Automated Design Capabilities
- ⊕ Flat Organization - Task & Customer Oriented
- ⊕ True Empowering of Employees
- ⊕ Stable Staff offers known Quality and Continuity
- ⊕ Emphasis is on Quality, Long Term Relationship and Repeat Business
- ⊕ Active Community Support

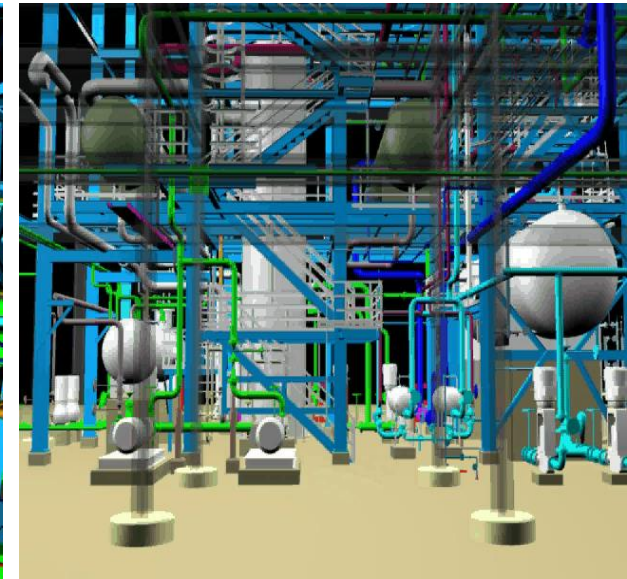
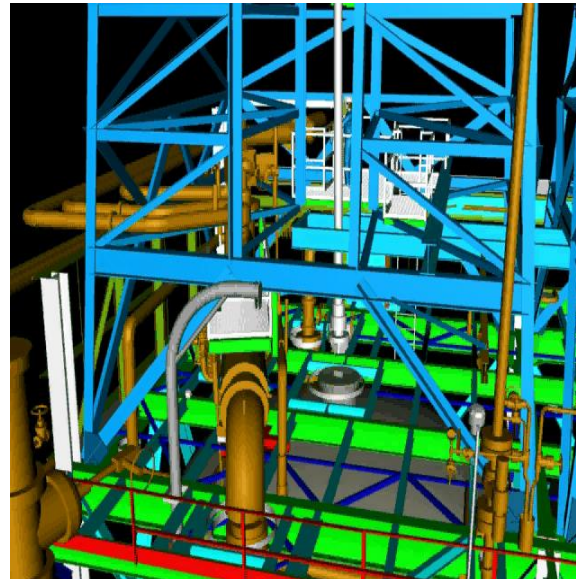
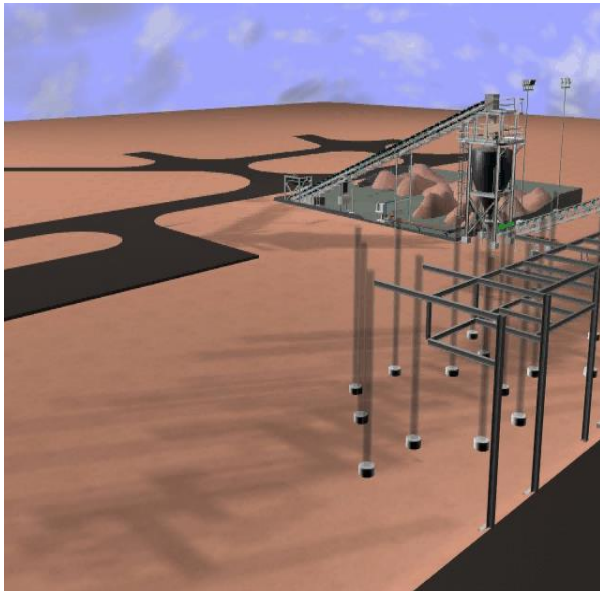
AREAS OF EXPERIENCE

Complete Project EPC Capabilities:

- **Engineering Designs**
- **Fabrication, Construction, Installation and Commissioning**
- **NDT and Pipeline Integrity Survey**
- **Project Management Support Services**
- **Procurement Services**
- **Manpower and Training Services**
- **Operations and Maintenance Services**

COMPUTER AIDED DESIGN AND DRAFTING

- AutoCAD with 3D capabilities in CadPipe and AutoPlant
Microstation Intergraph with 3D capabilities in Plant Design Systems
Digitize drawings to CAD platform



PIPELINE INTEGRITY SURVEY

NDT/DRT

On-site plant maintenance inspections of insulated pipes, joints, welds etc.

No need to dismantle pipe segments, remove insulation to trace leaks or halt production for long periods of time.



LONG RANGE ULTRASONIC TEST

Guided Wave Ultrasonic Testing (Technology Brief)

The Long Range Guided Wave Ultrasonic Technique (LRUT) was designed to inspect 100 percent of a pipe segment from one single location.

Its primary application is within the Oil and Gas Refining, Petrochemical, Storage, Offshore and Pipeline Transportation industries used to inspect difficult to access piping systems such as:

- Insulated Pipe in Refineries
- Offshore Pipeline Risers
- Cased Road or Railway Crossings
- Loading Lines
- Tank Dyke Pipeline Crossings
- Above Ground or Buried Flow Lines
- River or Bridge Pipeline Crossings



PAST WORK EXPERIENCE

- PPMC loading arm project (Lagos, Ibadan and Ilorin sites).
- Bonny Terminal Integrated Project – SPDC Project Management, Logistics and Execution of Bonny Terminal Stations 1998 – 2003.
- Maintenance Services of Agbara Platform for AGIP ENERGY Project Management, Provision of Logistics, Quality Control Services.
- NLNG – Provision of NDT Services/CP Systems and Consultancy Service Pipelines Maintenance with Ancillary Equipment, Cathodic Protection System Commissioning.
- Radiographic Inspection services for NLNG Facilities, using the modern Digital Radiographic Technology – Call-out contract.

PAST WORK EXPERIENCE

- Pan Ocean Oil Corporation, Engineering, Supply, Construction and Commissioning, Ovade-Ogharefe Gas Plant I – 2008 – 2009.
- Okoro Field Development Pipeline Project. Executed by Dynamic Processing Solution Oil Services Ltd (DPS) in the year 2007-2008.
- Escravos Gas Project Okan Jacket and Meji jacket for Chevron. Executed by Niger Dock Nigerian Plc in the year 2006-2007.
- Development of Pipelines Integrity Management Systems program for NLNG OGGS, and Condition Monitoring and Inspection of Gas flow lines for NLNG – 2005 - 2007.
- Thickness measurement and Flaw evaluation for NLNG Trains and Facilities using Ultrasonic Inspection technique with Ultra doc 3.10 software version – 2002 to date.

PAST WORK EXPERIENCE

- A five year call-out DT/NDT Inspection services which includes MFL tank Scanning and IRIS Inspection services for NLNG.
- Fabrication of spools and pipes, CP Design & Installation for Freezone Plant Fabrication International (FPFI) Onne.
- Inspection Services for Delta Afrik Engineering Ltd, Lagos.
- Long Range Ultrasonic test for Non-Piggable Pipelines for SPDC.
- Flare System Design for NPDC Benin City.
- CP Condition Monitoring for NDPR Port Harcourt.
- Design, Construction and Installation of 5000bbld of Crude Oil.

CLIENT LIST

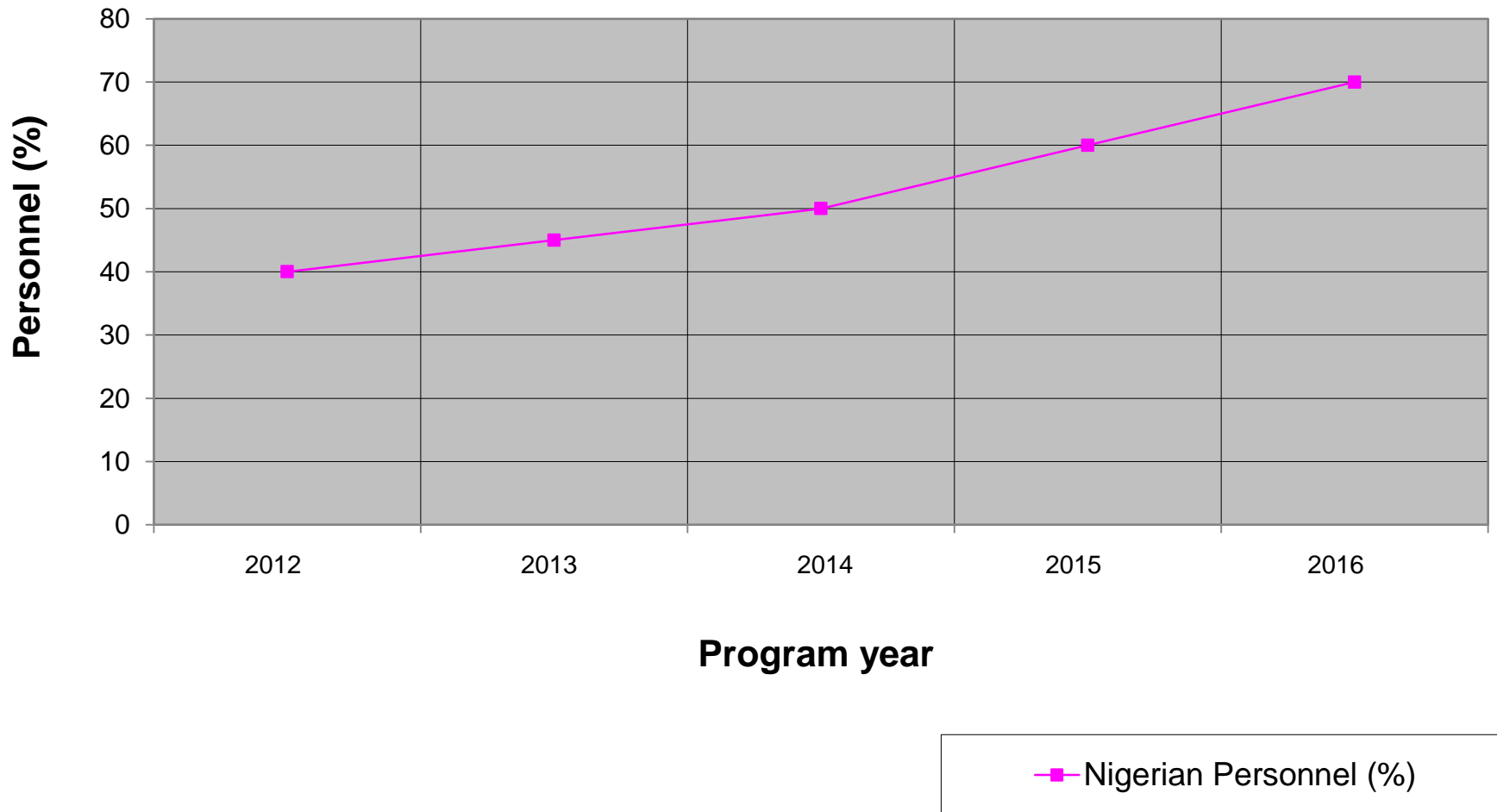
- ExxonMobil Producing Unlimited
- Deltafrik Nig Limited
- Eleme Petrochemical Co Ltd
- Esso Exploration & Production.
- NLNG
- NNPC Business Units
- Shell
- NAOC
- Frigoglass
- Total E & P
- Pan Ocean Oil Corp
- Indorama
- Heerema
- KNOC
- ADDAX
- Chevron
- Ascon Oil

RELATIONSHIPS

MTL Presently Has Relationships With:

- ✓ Tyco Fire & Integrated Solutions Usa
- ✓ Yearn Hern Enterprises Co Ltd, Taiwan
- ✓ Lavatisca International, Norway
- ✓ Shengli Oilfield Shengji Pet. Eqpt Co Ltd
- ✓ Xi'an Fengyang Petroleum Eqpts Co Ltd, China
- ✓ Computerized Information Tech Ltd
- ✓ Precision Engineering And Procurement Company(pepco)
- ✓ Vidisco Ltd, Israel
- ✓ Tosl, Trinidad & Tobago
- ✓ CIT, UK
- ✓ Twl/Techcorr, Uk & USA
- ✓ PPT, South Africa
- ✓ PII, India
- ✓ Flow Technology International
- ✓ Veritas –MSI (China) Co., Ltd

Multinational Technologies Limited NIGERIAN PERSONNEL CAPACITY DEVELOPMENT PLAN



LOCAL CONTENT POLICY

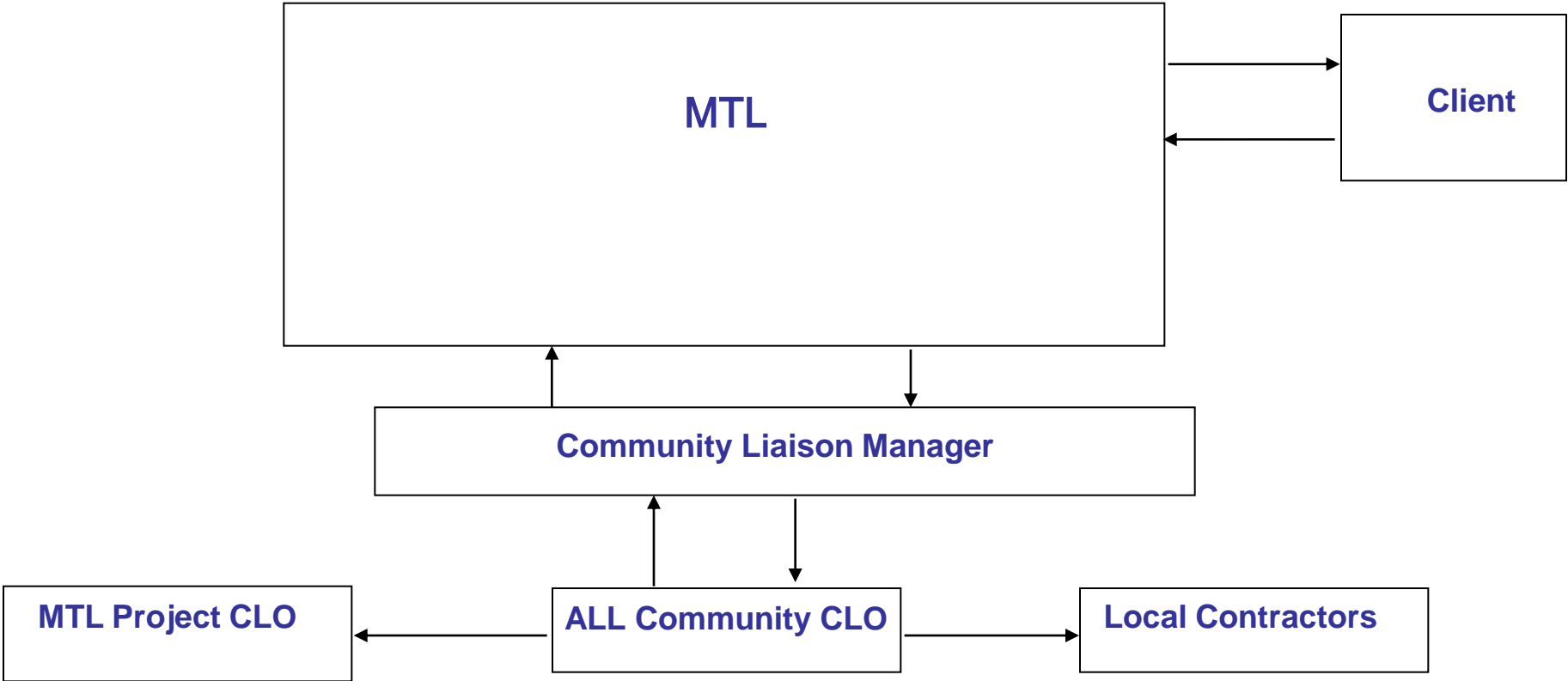
MTL is in full support of government's initiative to execute all contracts locally:

- 🇳🇵 Training/ Development of Local Personnel
- 🇳🇵 Employment of qualified Professionals
- 🇳🇵 Use of Local Contractors/ Suppliers

QUALITY POLICY STATEMENT

- ④ Uncompromised quality and consistency
- ④ Continuous quality improvement.
- ④ Continue to build and develop processes to provide quality services.
- ④ Design products are safe, technically superior, highly reliable, easy to operate and maintain.

COMMUNITY AFFAIRS



HSE POLICY STATEMENT

- ④ Optimum use of materials and resources (including recovery and recycling as opposed to disposals).
- ④ Compliance with all relevant environmental legislation and regulations
- ④ To ensure that the activities of the project are performed with minimum impact to the environment.
- ④ The risks of all personnel, including suppliers and third party contractors, in the execution of this project shall be as low as possible.

WHY SELECT MTL

- Key project personnel are licensed Engineers.
- All Engineering Disciplines available within MTL
- Demonstrated experience working with similar clients
- Staff experienced in designing similar system
- Provide unique capabilities used by industrial clients
- MTL experience professionals are committed to demonstrated performance for all types of project.
- Available and ready to start project support now